



Agricultural  
Resilience  
Impact &  
Innovation  
Hub

# Introducing AGRIIH: Cultivating Collaborative Research to Enable Agriculture to Respond to a Changing World

Jing Zhang, Department of Biology; Environmental Change Institute, University of Oxford

Jen Lucey, Smith School of Enterprise and the Environment, University of Oxford

## What is AGRIIH

The **Agricultural Resilience Impact and Innovation Hub (AGRIIH)** is an Oxford initiative that catalyses agricultural resilience research and innovation through **strategic, co-created research, real-world partnerships, and systems-based solutions**. AGRIIH brings together diverse disciplines, external partners, and global stakeholders to strengthen agriculture's resilience to rising social, environmental, and economic risks.

## Our Approach



## Research Landscape Analysis

We commissioned consultancy firm, Red Kite, to conduct a research landscape analysis. Their research involved extensive interviews and desk-based research across the UK, Europe, and the Global South. They consulted universities, research institutes, farmer organisations, policymakers, funders, and agribusiness leaders.

### Key challenges from the Research Landscape Analysis

**Resilience is essential.** "Instability is going to increase, shocks are going to get worse and we need to get ready for that."

**Agriculture operates in a complex, interconnected system.** "We need to instil systems thinking, because currently much agricultural research in the UK is very silo-based, not helped by lack of awareness withing Government of the broader complex system."

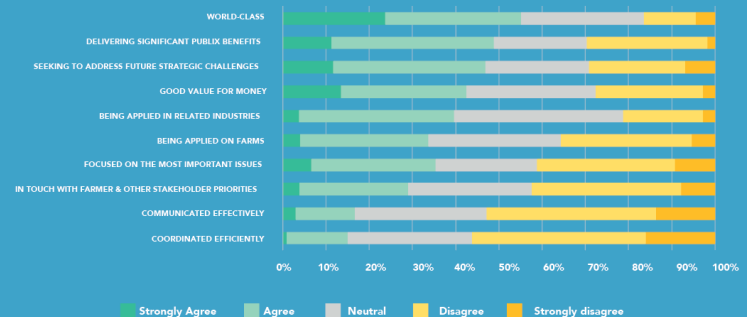
**Research often fails to translate into action and innovation doesn't match real-world needs.** "Research in this field must be participatory and co-designed with farmers and advisers from inception."

**Interdisciplinary collaboration is needed but structurally difficult.** "Good interdisciplinary research needs time, listening, and a problem-solving mindset."

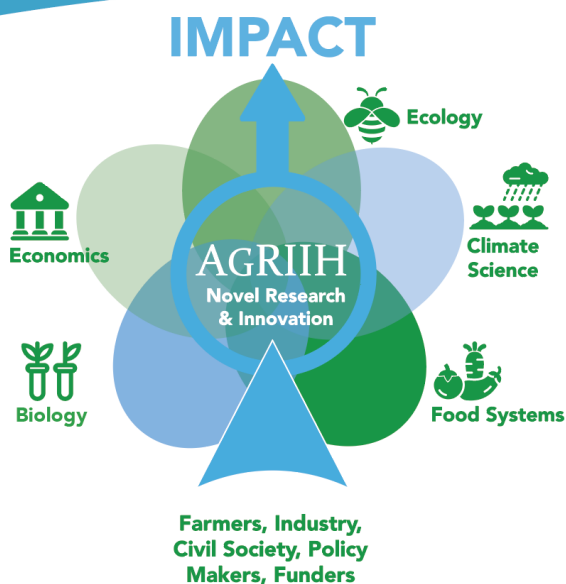
## Why AGRIIH

**Agriculture** sustains over 8 billion people but faces compounding risks- from climate shocks and market volatility to biodiversity loss and policy shifts.

**Resilience** is no longer optional; it must be built into how we grow food, manage land, and design systems. Resilience goes beyond sustainability—it is adaptive, systemic, and forward-looking.



AUC-UK's stakeholder survey showed respondents considered UK research 'world-class', but poorly coordinated and poorly communicated. Adapted from Agricultural Universities Council UK- Research Strategy (May 2023).



AGRIIH aims to bring together the diverse knowledge and expertise from across disciplines and departments at Oxford and develop partnerships with stakeholders to advance innovation and impact in agricultural resilience.

## AGRIIH's key action pillars in response to identified challenges

**Integrated system approach** - addressing fragmented nature of agriculture-related research to identify leverage points across interconnected systems.

**Internal collaboration** - bridging disciplinary silos to improve coordination, cooperation, communication across disciplines.

**Stakeholder co-creation** - addressing the gap to adoption and making sure our research is grounded in real-world challenges by engaging end-users from the outset.

**UK and Global South focus** - capitalising on our ability to create change at home and in biodiversity, climate and livelihood- critical regions of the world.

## Building the internal network

Our first cross-departmental workshop on agricultural resilience, held on June 2nd, titled 'Creating a Problem/Solution Oriented Map of Interdisciplinary Research Opportunities for Agricultural Resilience Impact and Innovation,' fostered an interdisciplinary understanding of the term and identified key theme areas for challenge-oriented research.

## External network

Stakeholder surveys coming soon!

## Get Involved

Sign up for the AGRIIH mailing list to stay updated on news and activities.

Web: [agriih.web.ox.ac.uk](http://agriih.web.ox.ac.uk) Email: [agriih@biology.ox.ac.uk](mailto:agriih@biology.ox.ac.uk)

